

- It consists of obtaining food from dead and decaying organic food by first pouring digestive juices over the same and then sucking the digested food.
Example – Spider, housefly

iii) Parasitic nutrition

- In this type of nutrition, food is obtained in liquid form from the body of another killing him
- Example – *Plasmodium*, *Trypanosoma*, *Taenia*, *ascaris*

DIGESTIVE SYSTEM OF HUMAN

- It is a system of alimentary canal and digestive glands that takes part in ingestion of food, its crushing, digestion, absorption of digested nutrients and egestion of undigested materials.

Mouth

- The mouth is a transverse slit. It is bounded by two soft movable lips
- The lips are covered with skin and mucous membrane on the inner side
- In mammals, the upper lip has a well defined cleft called median cleft, which provides exposure to the teeth
- In human, the median cleft not seen but only a depression can be seen which is called philtrum

Vestibule

- It is a narrow space enclosed between the lips and cheeks externally and the gums and teeth internally
- In the vestibule, a small median fold of mucous membrane, the superior labial frenulum, connects the middle of the upper lips to the gum.
- A smaller inferior labial frenulum connects the middle of lower lip to the gum.

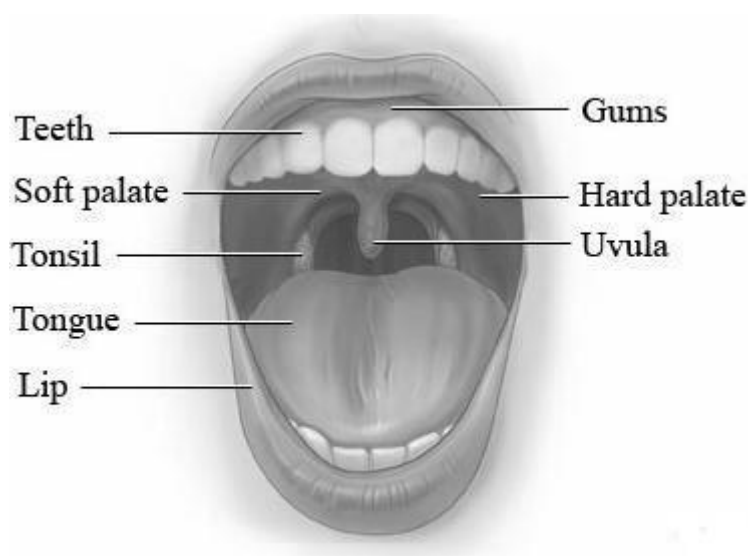
Oral (Buccal) cavity

- It is a space bounded above by the palate, below by the throat and on the sides by the jaws.
- The buccal cavity is lined by stratified squamous epithelium.

Palates

- The anterior part of palate is arched and strong. It is called hard palate. This part is well supported by maxilla bone.

- It bears transverse ridges called palatine rugae. The rugae help in keeping the food in place during mastication.
- The posterior part of the palate is smooth and fleshy. It is termed soft palate. Its smooth surface makes swallowing easy.
- The soft palate contains hanging small, conical flap called uvula.
- The uvula is movable and capable of coming in contact with the posterior pharyngeal walls so as to cut off the upper nasal part of the pharynx, called nasopharynx from the lower oral part of the pharynx, termed oropharynx during swallowing.

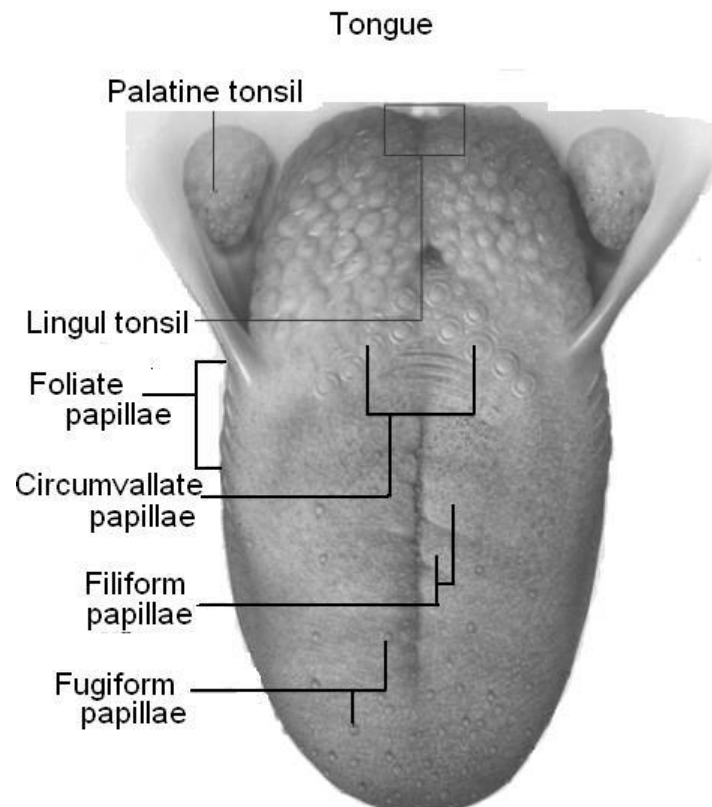


Tongue

- The tongue is a voluntary musculo-sensory and glandular structure which occupies the floor of the mouth.
- It is attached to the floor of the mouth by a fold called frenulum.
- An inverted V-shaped furrow termed the sulcus terminalis divided into the upper surface of the tongue into the anterior oral part and posterior pharyngeal part.
- Upper surface of the oral part of the tongue has a slight median groove
- The upper surface of tongue has four types of papillae , small projection which bear taste buds
 - i) Vallate (surrounded by wall)
 - ii) Fungiform (mushroom shaped)
 - iii) Foliate (leaf –shaped)
 - iv) Filiform (filament-shaped)

Function of the tongue

- i) It helps in chewing the food.
- ii) It plays a role in speech.
- iii) It aids in swallowing the food and mixing the food and saliva.
- iv) It acts as brush to clear the teeth by cleaning small food particles.
- v) It is an organ of taste and can recognize four tastes, i.e. salty, sweet, bitter and sour.



Teeth

- Teeth are hard structures which are meant for holding and crushing the food.
- Most of the mammals have diphyodont (two sets of teeth-milk or deciduous and permanent), thecodont (teeth are embedded in the socket of jaw bone) and heterodont teeth (different types of teeth).

Types of teeth

- There are four kinds of teeth incisors, canines, premolars and molars present in the human
- Incisors: These are chisel shaped and possess sharp cutting edges

- They are usually specialized for cutting
- Canines: They lie immediately behind the incisors
Canines are well developed in carnivores and may be absent in herbivores leaving a gap called diastema (which is used to separate the chewed and unchewed food in the mouth cavity)
They have long, sharp pointed end for piercing, killing and tearing off flesh
- Premolars and molars: these are called cheek teeth which are broad, strong crushing teeth.
Last molars in human beings are called wisdom teeth.

Structure of teeth

- Teeth are embedded in the jaws man has fixed upper jaw and movable lower jaws. Each tooth consists of three parts: crown, root, neck.
 - a) Crown: It is the exposed portion of tooth above the gums (gingiva)
- The gingiva is a specialized region of the oral mucosa surrounding the neck of the teeth
- Crown is covered with the hardest substances called enamel that protects the crown
- Beneath the enamel is dentine which is made up of hard substances but are not tough as enamel and they can decay
- Dentine forms the bulk of the tooth. There is a pulp cavity inside the dentine. It is jelly like substance and carries the nerves fibres, blood vessels and sensory cells.
- The nerves supply to the upper teeth is by the branches of maxillary nerves and to the lower teeth by the branches of mandibular nerves. These both are branches of 5th cranial nerve called trigeminal nerve.
 - b) Neck: It is a narrow portion at the gumline.
 - c) Root: It is embedded in the jaw bone and holds the tooth securely in place.
- The root is fixed in alveolus of the jaw bone by periodontal membrane and cementum. Cement holds a tooth in its socket and periodontal membrane covers the cement.

Number of teeth

- The milk or deciduous teeth are 20 in number, 10 in upper and 10 in lower jaw
- The deciduous teeth begin to erupt when the child is about 6 months old and should all be present by the end should all be present by the end of 24 months.

- The permanent teeth begin to replace the milk teeth in the 6th year of age. These teeth are 32 and usually complete by the 20th year

Dental formulae

- The number and kinds of teeth in mammals are represented by an equation called dental formula. This equation looks like

$$\frac{ICP_m M}{ICP_m M}$$

-

I = Incisors, C = Canines P_m = Premolars

- Total number of teeth = Number of teeth in dental formula × 2

Dental formula of some animals

Pig

$$\frac{3143}{3143} \times 2 = 44$$

Dog

$$\frac{3142}{3143} \times 2 = 42$$

Kangaroo

$$\frac{3124}{3124} \times 2 = 34$$

Man

$$\frac{2123}{2123} \times 2 = 32$$

Elephant

$$\frac{1003}{0003} \times 2 = 14$$

Cat

$$\frac{3131}{3121} \times 2 = 30$$

Rat

$$\frac{1003}{1003} \times 2 = 16$$

Cow, sheep, goat

$$\frac{0033}{3133} \times 2 = 32$$

TYPES OF TEETH

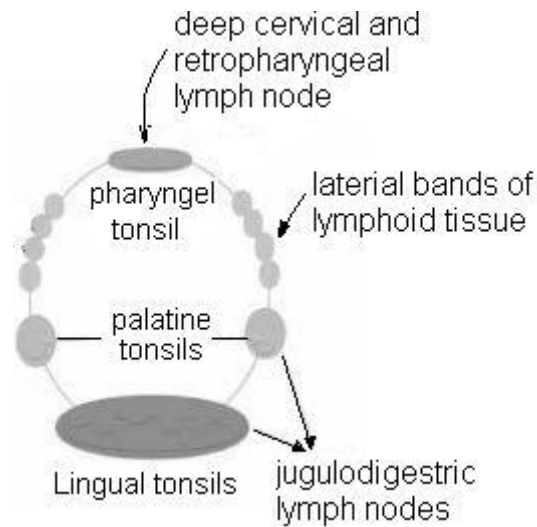
1. Aerodont
Part of bone, not embedded in sockets eg. Reptiles, except crocodiles
2. Thecodont
Embedded in deep socket of some jaw bones e.g. mammals, crocodiles
3. Monophycodont
Teeth grow only once in life e.g. platypus, toothed whale.
4. Diphyodont
All teeth, except molar, grow twice in life. Eg. Mammals
5. Polyphyodont
Fallen or wornout teeth can be replaced many times throughout life. Eg. Frog
6. Isodont
All teeth are similar Eg. Tooth whale
7. Heterodont
More than one type of teeth E.g mammals, crocodiles

PHARYNX

The mouth leads to funnel shaped pharynx. The pharynx is about 12cm long vertical canal beyond the soft palate. The food and air passages cross here. The pharynx may be divided into three parts

- i) Nasopharynx
Upper part of Pharynx
Have internal nares in the root, oval opening of Eustachion tubes
- ii) Oropharynx
Middle part of pharynx
Has palatine tonsils
- iii) Laryngopharynx
 - Lower part of pharynx
 - Leads to oesophagus and to pharynx through glottis (opening to larynx) and epiglottis (leaf like cartilageous flap)
 - The function of the pharynx as a part of digestive tract is merely to serve as passage way for the food from oral cavity to oesophagus
 - The lymphatic tissues of pharynx and oral cavity are arranged in a ring which are collectively called Waldeyer's ring. All these lymphoid tissue are active in production of immunoglobulin A which forms an important part of our immune system

- Waldeyer's ring



(i) Nasopharyngeal tonsils

- In children nasopharyngeal tonsil become enlarged and is then referred to as adenoids
- The resulting swelling causes obstruction to normal breathing

(ii) Tubal tonsils

Lymphoid tissue found around the opening of each Eustachian tube

(iii) Palatine tonsils

- Located in the lateral wall of oropharynx
- The palatine tonsils is often infected leading to sore throat and surgical removal of such enlarged tonsils become necessary

(iv) Lingual tonsils

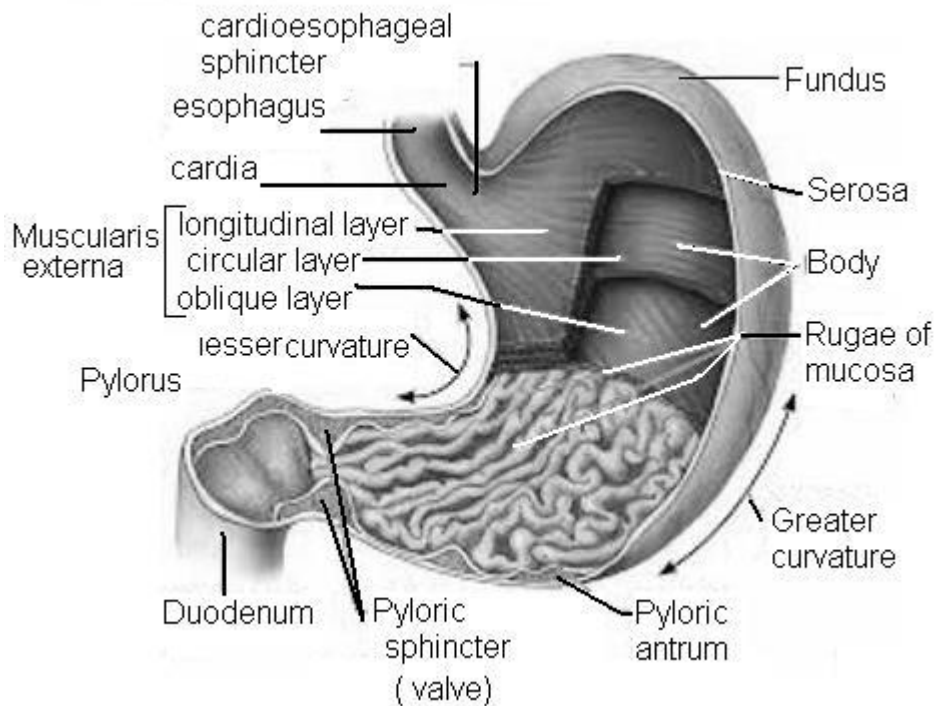
- Lymphoid tissue present at the base of tongue

Oesophagus

- The oesophagus is 25 cm long, narrow muscular straight tube lined by stratified squamous epithelium containing mucous glands
- The opening of oesophagus is called gullet
- It runs downward through the neck behind the trachea and through behind the heart and passes through diaphragm into abdomen. Here it sharply bends to open into the stomach. This bend is one of the device to check the backflow of the stomach content into the oesophagus
- Longitudinal folds keep its cavity almost closed, except during swallowing of food.

- The oesophagus serves to convey the food by peristalsis (a series of waves of contraction that passes through ends and is meant for pushing food) from pharynx to stomach
- The nerve supply to oesophagus includes parasympathetic and sympathetic branches seen in the form of myenteric and messner's plexus namely

Stomach



- Stomach is the widest organ about 30 cm long and 15cm wide of alimentary canal.
- It is a hollow, J- shaped organ lying between the oesophagus and the small intestine. The exact positioning of the stomach is in the upper (5/6)th part and right (1/6)th part of abdominal cavity
- The lesser curvature is short and lies on the posterior surface of stomach. The greater curvature is on anterior surface of stomach.
- The fold of peritoneum which attaches the stomach to the posterior abdominal wall extends beyond the greater curvature. This is called the greater omentum which stores fat
- Inner surface of the stomach has numerous folds, the gastric rugae. These folds, by unfolding let the stomach expand to accommodate a large meal
- Unlike other parts of the digestive tract, the stomach wall contains three smooth muscle layers, outer of longitudinal, middle of circular and inner of oblique fibres, to churn the food and to mix it with the gastric secretion

- The stomach has four parts: cardiac part, fundus, body and pyloric part
 - (i) Cardiac part: It is so called because it is present near the heart. The cardiac sphincter lies in the opening between oesophagus and stomach. It is a functional valve
 - (ii) Fundus: It extends superiorly from the cardiac part. The fundus is commonly filled with gas or air
 - (iii) Body :It is main part stomach
 - (iv) Pyloric part : It is the distal part of stomach. The pyloric region is divided into the pyloric antrum and pyloric canal. The pyloric sphincter guards the opening between the stomach and duodenum and periodically permits partially digested food to leave the stomach and enter duodenum

Functions

- (i) Storage: the stomach allows a meal to be consumed and the material to be consumed and the materials released incrementally into the duodenum from digestion
- (ii) Chemical digestion: Pepsin begins the process of protein digestion cleaving large polypeptides into shorter chains
- (iii) Mechanical digestion: The churning action of muscularis causes liquifaction and mixing of the contents to produce acid chyme
- (iv) Some absorption: Water, electrolyte monosaccharides and fat soluble molecules including alcohol are all absorbed in stomach to some degrees.

Ruminant Stomach

In ruminants, the stomach is differentiated into chambers

- (i) Large rumen for churning, breaking of food by cornified surface of villi, fermentation of cellulose by symbiotic microorganism
- (ii) Reticulum
- (iii) Omasum for mechanical churning and breaking of food, absorption of fluid
- (iv) Abomasum for mixing gastric juice, ruminates the chew cud. This is done by breaking small part of food present in rumen and sending it to buccal cavity for chewing. Omasum is absent in camel. Here rumen and reticulum have water pockets for temporary storage of food. Abomasum functions as true stomach.

Small intestine

- The small intestine is a narrow tube, about 6 metres long in a living adult. It is the longest part of the alimentary canal. It comprises of three parts: duodenum, jejunum and ileum
 - (i) Duodenum: It is a C-shaped structure and about 25 cm long. It receives the hepatopancreatic duct formed by union of bile duct (from liver) and pancreatic duct (from pancreas) and whose opening is guarded by sphincter of oddi. Small nodules of lymphoid tissue are seen along the entire length of small intestine. These nodules are called Peyer's patches
 - (ii) Jejunum: It is slightly coiled moderately wide (3.5 – 4 cm) middle part of small intestine. Its wall is thicker and more vascular than that of duodenum. Jejunum is rich in digestive glands villi are rounded. Its length is about 0.8 – 1.5m
 - (iii) Ileum: the ileum forms the lower part of small intestine. It is about 3.5 m long, and opens into large intestine. It is characterized by club-shaped villi and Peyer's patches. Villi increase internal surface of ileum by about 10 times. Peyer's patches contain higher concentration of white blood cells that help protect the body from infection and disease

Functions

- (i) The small intestine completes digestion of proteins, carbohydrate, nucleic acids and fats.
- (ii) It absorbs nutrient materials into the blood and lymph and also lubrication of food.
- (iii) It secretes certain hormones such as cholecystokinin, secretin, enterogastrone, duocrinin, enterocrinin and villikinin.

Function

Most nutrient absorption occurs in the small intestine including minerals, vitamins, proteins, and fats. Iron, calcium, magnesium, and zinc are absorbed almost immediately after leaving the stomach – i.e., in the 8 feet of the duodenum and the jejunum.

Sugars and vitamin C, as well as thiamin, riboflavin, pyridoxine, and folic acid, are absorbed in the upper third of the small intestine.

Protein is absorbed approximately midway through the ileum.

Water and lipids are absorbed by passive diffusion throughout the small intestine.

Sodium bicarbonate is absorbed by active transport and glucose and amino acid co-transport.

Vitamins A, D, E, and K, fats, and cholesterol are absorbed in the lower third of the ileum. Vitamin B₁₂ is absorbed just before the small intestine joins the large intestine. Bile salts are reabsorbed in the distal ileum and the ascending colon.

Large intestine

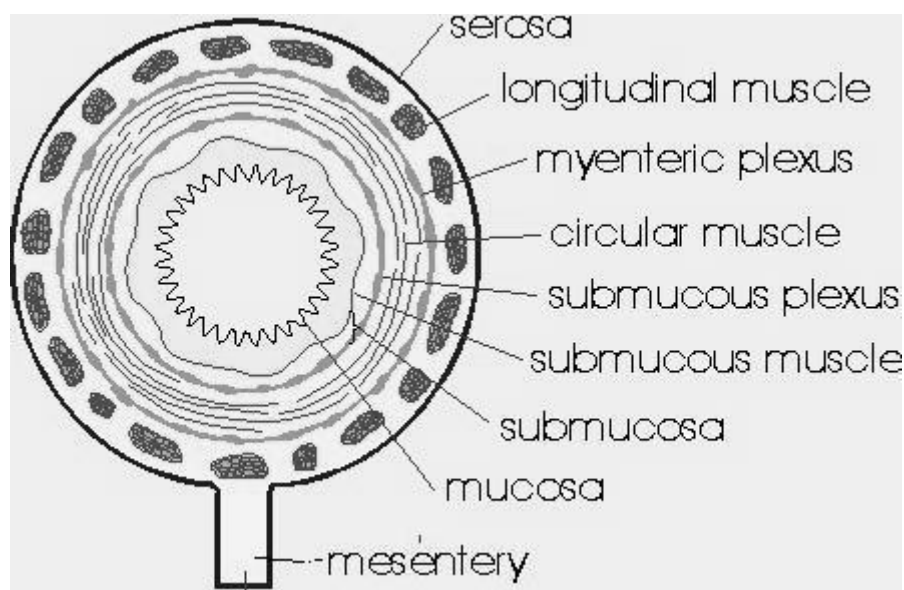
- Its diameter varies from one region to another but it is always larger than that of small intestine. It is about 1.5 metres long and is divisible into three parts caecum, colon and rectum
 - (i) Caecum and vermiform appendix:
The caecum is a pouch – like structure which is about 6cm. The caecum is called ileocaecal junction guarded by ileocaecal valve which prevents back flow. The vermiform appendix is an outgrowth of the caecum. It is slightly about 8 cm long. Its wall contains prominent lymphoid tissue. Appendix is thought to be vestigial. The inflammation of vermiform appendix due to decay of food or warm infection is called appendicitis and rupture of appendix leads to spilling of faecal matter onto the peritoneum leading to infection and inflammation known as peritonitis. The caecum is well developed in herbivorous mammals like, horse, rabbit, etc.
 - (ii) Colon: The caecum leads into the colon, which is divided into four regions, the ascending, transverse, descending and sigmoid colon. The sigmoid colon is S-shaped and enters the pelvis and joins the rectum. Ascending colon is the shortest part of the colon. The right colic flexure marks the boundary between the ascending and transverse colon; the left flexure (splenic flexure) marks the boundary between the transverse and descending colon.
 - (iii) Rectum: The sigmoid colon opens into the rectum. The rectum comprises the last 20cm of the digestive tract and terminates in a 2cm long anal canal. The mucosa of the anal canal is folded into several vertical folds, called anal columns, supplied with arteries and veins.

- The opening of anal canal is called anus. The anus has internal anal sphincter composed of smooth muscle fibres and external anal sphincter comprised of striped muscle fibres
- Structures formed due to enlargement of veins of anal columns in anal canal as well as anus are called haemorrhoids or piles

Functions

- (i) The large intestine does not secrete enzymes. It plays a minor role in the absorption of nutrients. It stores unabsorbed food remnants temporarily, concentrates the contents by absorbing water to form faeces and the movement of the colon helps to avoid faeces through anus
- (ii) It also play role in digestion and excretion
- (iii) The colon bacteria (E. Coli) produce vitamins B and K which are absorbed

HISTOLOGY OF HUMAN GUT



It is a hollow tube having a central cavity or lumen surrounded by a distensible wall, wall of gut is differentiated into four regions which starting from outside to inside are serosa, muscularis, externa, submucosa and mucosa

- (i) **Serosa:** It is fibrous outer coat or covering layer of gut. Serous consists of two parts, visceral peritoneum and a sheet of loose connective tissue called subserosa
- (ii) **Muscularis externa(muscular coat):** It is quite thick in the region of stomach and proximal part of intestine muscularis externa has an outer layer of longitudinal smooth fibres followed by a thick layer of circular smooth muscles. Another layer of oblique muscle fibres occurs in stomach inner to circular muscle fibres. On contraction, circular muscular muscle fibres bring about narrowing of gut while longitudinal muscle fibres cause shortening of gut
- (iii) **Submucosa.** It is a layer of connective tissues that lies below the muscularis externa. Submucosa contains nerves, blood vessels and lymph vessels. The tissue has a lot of collagen and elastin fibres for permitting changes in transverse and longitudinal dimensions
- (iv) **Mucosa:** It is the innermost which is thrown into circular folds or plical circulars (valves of kerking or valvulae conniventes) in the region of intestine. Longitudinal folds or rugal occur in case of empty stomach. Circular folds slow down the movement of food through the intestine. The intestinal wall also bears millions of microscopic figure like projections called villi. Mucosa is differentiated into three layer, namely epithelium, lamina propria and muscularis mucosae

(a) Epithelium

These are columnar cell and possess upto 3000 microvilli on their free surface.

Goblet or mucous cells are columnar shaped glandular cells which secrete mucus. Mucus functions as lubricant. It protects the wall of gut from action of proteolytic enzymes. Mucus further provides protection to the epithelium against abrasion or excoriation

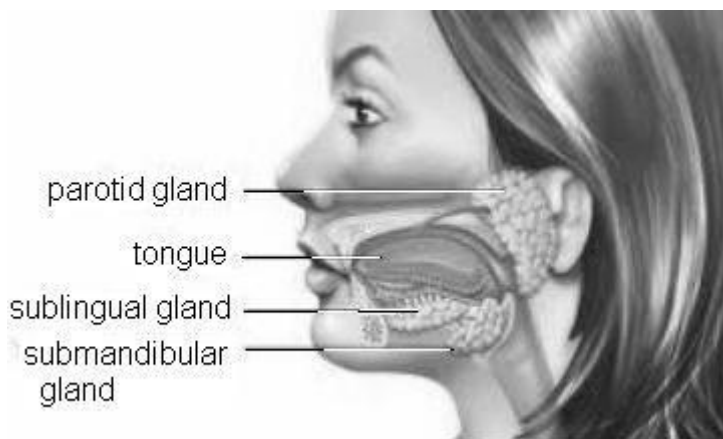
Epithelium bears a number of pits. The pits bears deep tubular glands in stomach and upper duodenum. They are called crypts of Lieberkuhn in the region of intestine

(b) Lamina propia

It is a layer of areolar reticular connective tissue which contains some scattered smooth muscle cells, blood, capillaries, lymph vessels and non-medullated nerve fibres. It possesses Peyer's patches

- (c) Muscularis mucosae: It forms the outer boundary of mucosa that possesses smooth longitudinal muscle fibres externally and smooth circular muscle fibres internally.

DIGESTIVE GLANDS



Salivary glands: There are three pairs of salivary glands : parotid, sublingual and submaxillary or submandibular.

- (i) Parotid glands: These are the largest salivary glands. They lie on the sides of the face, just below and in front of ears. Viral infection of parotid glands causing swelling and pain, is the disease called mumps.
- (ii) Sublingual glands: These lie under the front part of the tongue
- (iii) Submaxillary glands: These lie at the angles of the lower jaw. The submaxillary ducts, also known as Wharton's ducts open under the tongue

Saliva

- The salivary gland secrete a viscous fluid called saliva. It contains water, salts, an enzyme salivary amylase or ptyalin
- Its pH is neutral, being 6.7
- About 1.0 – 1.5 litres of saliva is produced daily
- The salivary gland secretion is very rich in salivary amylase. The secretion from sublingual and submaxillary glands are rich in mucin. Saliva contains two important enzyme, amylase and lysozyme.

- Amylase is a starching digesting enzyme, breaking starch into maltose and triose. Lysozyme causes lysis of several common bacteria that may be present in mouth. Mucin in saliva helps to lubricate the food for swallowing

Function

- (i) It moistens and lubricates the buccal cavity, tongue and lips, thus making speech possible.
- (ii) It also moistens food and changes it to semi-solid mass for easy swallowing
- (iii) Saliva washes mouth and tongue clear of food debris
- (iv) Its enzyme help in digestion

Gastric glands

- Fundic glands (oxyntic glands): They secrete HCl, pepsinogen and soluble mucin
- Pyloric glands: Secretion is rich in mucin and does not contain HCl
- Cardiac glands : Secrete mucin and very little pepsinogen
- Types of cells present in the epithelium of gastric glands are –
 - (i) Peptic cells are usually basal in location and secrete gastric digestive enzymes as proenzymes, pepsinogen and prorenin. The chief cells also produce small amount of gastric amylase and gastric lipase
 - (ii) Oxyntic cells are large and are most numerous on the side walls of the gastric glands. They secrete hydrochloric acid (HCl) and castle's intrinsic factor
 - (iii) Mucous cells are present between other and types of cells and secrete mucus. It protects stomach wall against HCl action and produce protein digestive enzyme
 - (iv) Endocrine glands are usually present in the basal parts of the gastric glands. They secrete serotonin, somatostatin and histamine, gastrin
 - Serotonin is a vasoconstrictor and stimulates the smooth muscles
 - Somatostatin suppresses the release of hormones from the digestive tract
 - Histamine dilates the walls of blood vessels
 - Gastrin stimulate the gastric glands to release gastric juice

Gastric juice

The secretion of the cells of gastric glands form gastric juice with pH 2 – 3.7. About 2,000 to 3,000 ml of gastric juice is secreted per day

Liver

- It is the largest internal gland of the body which is reddish brown in colour.
 - The liver lies in upper right side of the abdominal cavity just below the diaphragm.
 - It is heavier in males than females. In males it is generally 1.4 -1.8 kg and in females 1.2 – 1.4kg
 - It has both endocrine and exocrine parts
 - Liver is differentiable into small left lobe and large right lobe. The right lobe is further made of right lobe proper, quadrate lobe and caudate lobe. A pyriform yellow green muscular sac or gall bladder lie on inferior surface of right lobe. It is 8cm long and 2cm wide
 - The two lobes of liver produce right and left hepatic ducts. They join to form common hepatic duct. A cystic duct comes from gall bladder. The two join to form bile duct that attaches with pancreatic duct before opening in duodenum.
 - The opening of bile duct into pancreatic duct is controlled by sphincter of Boyden
 - Amount of bile produced per day is 600 ml. Bile from gall bladder is 5-10 times more concentrated. Its pH is 7.6 compared to 8.6pH of hepatic bile
 - Bile is yellowish green alkaline solution with 89-98% water, no digestive enzymes but four types of chemicals and some nondigestive enzymes
 - (a) Inorganic salts: Bicarbonates, chlorides, carbonates and phosphates of sodium, potassium and calcium
 - (b) Bile salts: Sodium taurocholate and sodium glycocholate,. They are partly water soluble and partly fat soluble
 - (c) Fatty substances: Cholesterol, lecithin and other phospholipids
 - (d) Bile pigments: Bilirubin (yellowish) and biliverdin (greenish). Other minor bile pigment are bilicyanin, bilipresin, bilifusun, bilihumin and bilifulvin
- Functions of liver
- (i) Secretion of bile
 - (ii) Deamination – It is a process by which the amino group (-NH₂) is removed from amino acids resulting the production of ammonia which is converted into urea
 - (iii) Excretion
 - Liver synthesis urea with the help of ammonia and carbon dioxide urea is passed out through excretory system
 - The bile contains bile pigments (bilirubin and biliverdin) are excretory products

- The liver cells also eliminate certain other waste products like cholesterol, metal ions and waste products of haemoglobin
- (iv) Glycogenesis : It is the conversion of the excess of glucose into glycogen by liver cells with the help of insulin secreted by pancreas
- (v) Glycogenolysis: It is the conversion of glycogen into glucose by the liver cells with the help of glucagon secreted by pancreas
- (vi) Lipogenesis: It is the conversion of glucose and amino acids into fats which takes place in liver
- (vii) Gluconeogenesis: It is the formation of glucose or glycogen from non-carbohydrate sources like amino acids, fatty acids etc.
- (viii) Detoxification: Liver converts toxic substances into harmless substances
- (ix) Haemopoiesis: The process of formation of blood corpuscles is called haemopoiesis. The liver produces red blood corpuscles in the embryo
- (x) Synthesis of blood protein: The liver produces blood protein such as prothrombin and fibrinogen that help in the clotting of blood
- (xi) Secretion of heparin- Liver secretes heparin (anticoagulant)
- (xii) Lymph formation: Liver is important for lymph formation
- (xiii) Synthesis of vitamin-A from B-carotene
- (xiv) Destruction of R.B.C. : The old worn out red blood corpuscles are broken down in the liver cells. Their haemoglobin is changed into bile pigments
- (xv) Phagocytosis: the Kupffer's cells of the liver engulf the disease causing microorganisms, dead cells and foreign matter
- (xvi) Osmoregulation: Liver produces angiotensinogen which helps kidneys in maintaining body fluid osmoregulation through the action of renin on angiotensin.

Pancreas

The pancreas is soft, lobulated grayish – pink gland which weighs about 60 grams. It is about 2.5cm wide and 12-15 cm long, located posterior to the stomach in the abdominal cavity

External structure of pancreas

- The main pancreatic duct (duct of Wirsung) is formed from smaller ducts within the pancreas. The main pancreatic duct opens into hepatopancreatic ampulla.
- An accessory pancreatic duct (duct of Santorini) is also present in pancreas and open directly into the duodenum

Internal Structure of pancreas

- (i) Exocrine part: the exocrine part of the pancreas consists of rounded lobules (acini) that secretes with pH 8.4. About 500-800 ml of pancreatic juice is secreted out per day. The pancreatic juice is carried by the main pancreatic duct into the abdomen through hepatopancreatic ampulla. The pancreatic juice contains sodium bicarbonate, three proenzymes; trypsinogen, chymotrypsinogen, chymotrypsinogen and procarboxy peptidase and some enzymes such as pancreatic amylase, DNAase, RNAase, pancreatic lipase. The pancreatic juice helps in the digestion of starch, protein, nucleic acids and fats, therefore pancreatic juice is also called complete digestive juice
- (ii) Endocrine part: the endocrine part of pancreas consists of groups of islets of Langerhans
Each islet is separated from the surrounding alveoli by a thin layer of reticular tissue. The islets are richly supplied with blood through a dense capillary plexus. The following three types of cells occur in pancreatic islets.
 - a) The alpha cells (α) – Secreting hormone glucagon
 - b) The beta cells (β) – Secreting hormone insulin
 - c) The delta cells (δ) – Producing hormone gastrin

In the islets of pancreas the alpha cells are arranged towards the periphery of the islets, the beta cells near the centre and the delta cells are placed peripherally

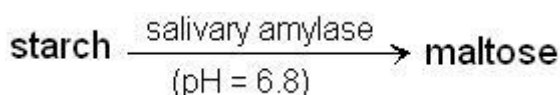
Intestinal glands

- The intestinal glands are numerous and microscopic. These are 2 types; crypts of Lieberkuhn and Brunner's gland
- (i) The crypts of Lieberkuhn are simple tubular glands and occur throughout the small intestine between the villi. They have two types of cells
 - (a) Paneth cells are found particularly in the duodenum. These cells are rich in zinc and contain acidophilic granules. They secrete lysozyme (antibacterial substance)
 - (b) Argentaffin cells are located among epithelial cells and are common in duodenum. It secretes serotonin. Serotonin is a powerful stimulant of smooth muscle, resulting in contraction and play a role in stimulating peristaltic activity of the intestine

- (ii) The Brunner's gland are branched tubular glands and are confined to the duodenum. They secrete alkaline watery fluid, little enzyme and mucus. The mixture of secretions is called intestinal juice or succus entericus. About 2 to 3 litres of succus entericus is secreted every day. It is alkaline (pH = 8.3) and contains many enzymes: amino peptidases, dipeptidases, intestinal amylases, maltase, isomaltase, nucleosidases

PROCESS OF DIGESTION

- Digestion is the breakdown of large complex insoluble organic food molecules into small, simpler soluble and diffusible particles by the action of digestive enzymes
- Digestion in mouth
- The tongue helps in tasting the food, mixes it well along with saliva. The saliva is continuously released and secreted into the buccal cavity by salivary glands under the influence of autonomic nervous system
- Mucus in saliva helps in lubricating and adhering the masticated food particles into a bolus. The bolus is then conveyed into pharynx and then into oesophagus by swallowing or deglutition.
- Saliva contains about 99% water along with K^+ and HCO_3^- . It contains a carbohydrate splitting enzyme called salivary amylase. About 30% of starch is hydrolysed into a disaccharide – maltose

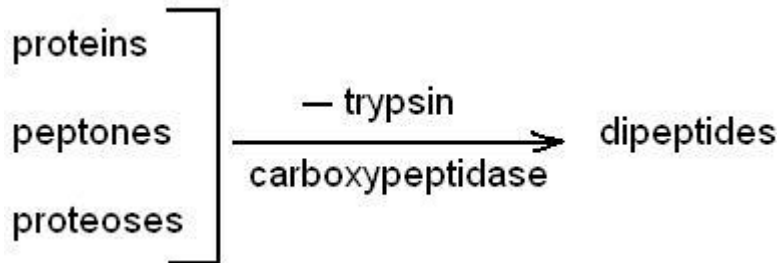


Digestion by Stomach

- The bolus of food remains in the stomach for 3-4 hours and gradually converted into semifluid mixture called chyme
- The proenzyme pepsinogen, on exposure to hydrochloric acid gets converted into active enzyme pepsin. Pepsin converts proteins into proteoses and peptones (peptides).
- The mucus and bicarbonates play important role in lubrication and protection of mucosal epithelium
- Renin is proteolytic enzyme found in gastric juice of infants which helps in the digestion of milk proteins

Digestion by intestine

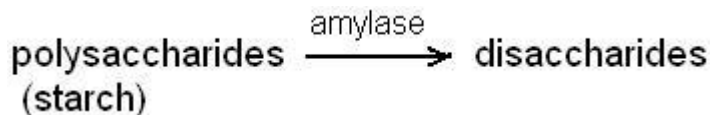
- Trypsinogen is activated by an enzyme, enterokinase, secreted by intestinal mucosa into active trypsin, which in turn activates the other enzymes. Proteins, proteases and peptones in chyme reaching the intestine are converted into dipeptides



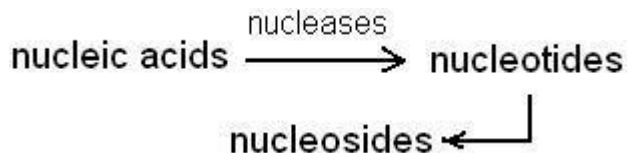
- Bile helps in emulsification of fats i.e. breaking down of fats into very small micelles. Bile also activates lipases. Fats are broken down by lipases with the help of bile into di- and monoglycerides.



- Carbohydrates in the chyme are hydrolysed by pancreatic amylase into disaccharides



- Nucleases in the pancreatic juice acts on nucleic acids to form nucleotides and nucleosides



- The enzymes in the succus entericus acts on the end products to form respective simple absorbable forms

- Most monoglycerides and fatty acids are converted into triglycerides which along with cholesterol, phospholipids and some protein forms chylomicrons inside Golgi apparatus. Chylomicrons are passed into lymph vessels or central lacteals.

NURITIONAL REQUIREMENT

1. Carbohydrates

- The sources of carbohydrates in our diet are cereals (rice, wheat, maize), potato, grams, fruits (banana, mango, melon), sugar, honey, sugarcane, beet, jam and milk
- An adult man of average weight and doing moderate work needs about 350-500gms of carbohydrates daily

2. Proteins

- The sources of proteins in our diet are cereals, pulses, oil, seeds and nuts, fish, egg, milk, soyabean, cheese, leafy vegetable.
- About 70 – 100 gms of protein are needed daily

3. Fats

- The sources of fats in our diet are vegetable cooking oil, ghee, butter, chese, eggs.
- About 50gms of fat is needed daily

4. Sodium

- The sources are table salt, beef, spinach
- It maintains electric potential across the membrane. It maintains pH balance of our body
- Deficiency of sodium causes cramps, diarrhea and dehydration, low blood pressure

5. Potassium

- The sources are banana, orange, milk, spinach
- It helps to retain water in cells. Maintains osmotic pressure
- Deficiency causes muscle disorder low BP

6. Chlorine

- The sources are table salt, cabbage, cheese
- It helps in regulation of osmotic pressure. It helps in formation of HCl in stomach
- Deficiency of loss of appetite, causes cramps

7. Calcium

- The sources are milk, green leafy vegetables, cheese, cereals

- Helps in clotting of blood. It helps in building of bones and teeth
 - Deficiency causes rickets, muscle spasms, retarded body growth
8. Phosphorous
- The sources are cereal grains, milk, meat, peas, cheese
 - It required for tooth and bone formation. It helps regulation of heart beat
 - Deficiency causes metabolic disorders
9. Iron
- Sources: Oatmeal, honey, dates, eggs, spinach, pulses
 - Importance : Formation of haemoglobin
 - Deficiency causes: Weakness and weak immunity
10. Iodine:
- Sources: Onion, table salt
 - Causes goiter (Deficiency)
11. Sulphur
- Sources : Meats, daily products
 - Importance: It helps to keep hair skin and nails healthy
 - Deficiency causes unhealthy growth of skin and hair
12. Magnesium
- Sources: Dairy products, green leafy vegetable, chocolate
 - It helps in muscle relaxation
 - Deficiency causes hallucinations, irregularities of metabolism
13. Copper
- Sources: Peanuts, beet, barley, soyabean, onion
 - It helps in development of blood vessels and connective tissue
 - Deficiency causes anemia
14. Chromium
- Sources : Black gram, soyabean, carrot
 - It promotes insulin action in the metabolism of sugar
 - Deficiency of nitrogenous waste products
15. Fluorine
- Sources: tea, city water supply
 - It maintains normal enamel and check dental caries
 - Deficiency causes weak teeth which are prone to decay
16. Zinc
- Sources: Barley, soyabean, groundnut, egg, almond
 - It hastens healing of wounds. It is needed for healthy skin and hair
 - Deficiency causes retarded growth rough skin and weak immunity

17. Cobalt

- Sources: Milk
- Deficiency causes anemia

18. Manganese

- Sources: Nuts, legumes
- It is important for reproduction and synthesis of haemoglobin
- Deficiency causes infertility, menstrual problems

19. Molybdenum

- Sources: Onion, potato, bajra
- It is important for synthesis of haemoglobin and absorption of iron
- Deficiency causes irregular excretion of nitrogenous waste products

20. Selenium

- Sources: Barley, garlic, orange juice
- It acts with vitamin E for slowing down ageing process
- Deficiency causes higher risk of cancer, cardiovascular disease

21. Fat soluble vitamins

(1) Vitamin – A

- Sources: Milk, butter, maize, carrot, papaya, spinach
- Deficiency causes night blindness drying of eyeball etc

(2) Vitamin – D

- Sources: Sunlight, cod liver oil, eggs
- Deficiency causes rickets
- Increases intestinal absorption of calcium and phosphorous

(3) Vitamin – E

- Sources : green vegetables, vegetable oil
- Deficiency causes reproduction failure, slow growth, anemia

(4) Vitamin – K

- Sources: Leafy vegetables
- Deficiency causes profuse and prolonged delay in blood clotting

22. Water soluble vitamins

(1) Vitamin B₁

- Sources : yeast, sprouted beans, nuts, pulses, cereal
- Deficiency causes beriberi, loss of appetite, accumulation of keto acids in blood

(2) Vitamin B₂

- Sources: yogurt, milk, green vegetables

- Deficiency causes skin disorder, headache, cheilosis (sores at corner of mouth)
(3) Vitamin B₃
- sources: pulses, liver, fish
- Deficiency causes pellagra, gum diseases, skin problems
(4) Vitamin B₅
- Sources: eggs, milk, ground nut and tomatoes
- Deficiency causes fatigue, muscle cramp, poor motor coordination
(5) Vitamin B₆
- Sources: All plant and animal tissues
- Deficiency cause anemia, diarrhea, nausea and vomiting
(6) Vitamin B₁₂
- Sources: Meat, fish, egg, milk
- Deficiency causes nervous disorder
(7) Vitamin C
- Sources: All citrus fruit
- Deficiency causes scurvy, bleeding from small vessels

DISORDERS OF DIGESTIVE SYSTEM

1. Jaundice: The liver is affected , skin and eyes turn yellow due to deposit of bile pigment
2. Vomiting: It is the ejection of stomach contents through the mouth. This reflex action is controlled by vomit centre in the medulla
3. Diarrhoea: the abnormal frequency of bowel movement and increased liquidity of faecal discharge is known as diarrhea
4. Constipation: in constipation, the faeces are retained within the rectum
5. Indigestion: in this condition, the food is not properly digested leading to a feeling of fullness